

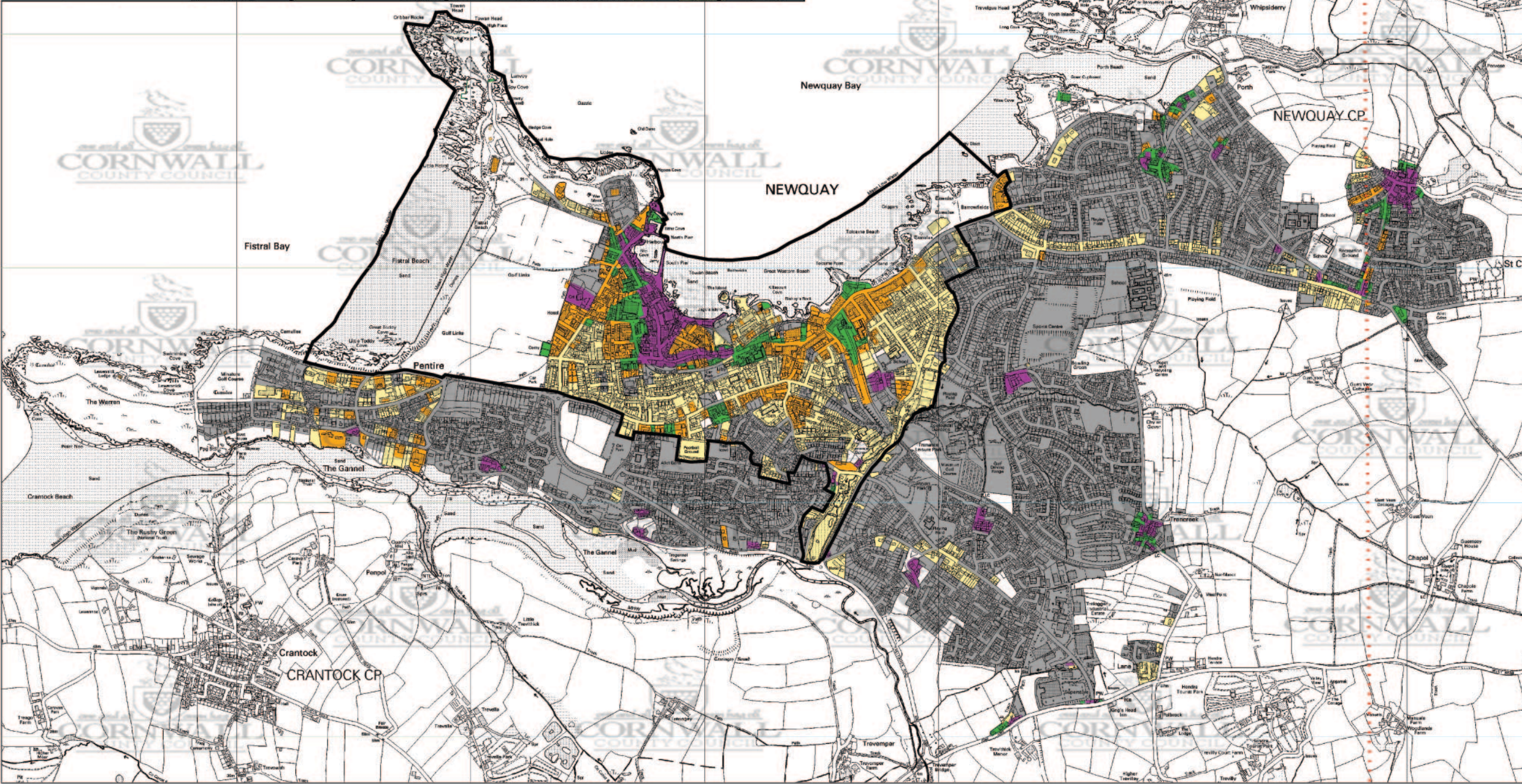
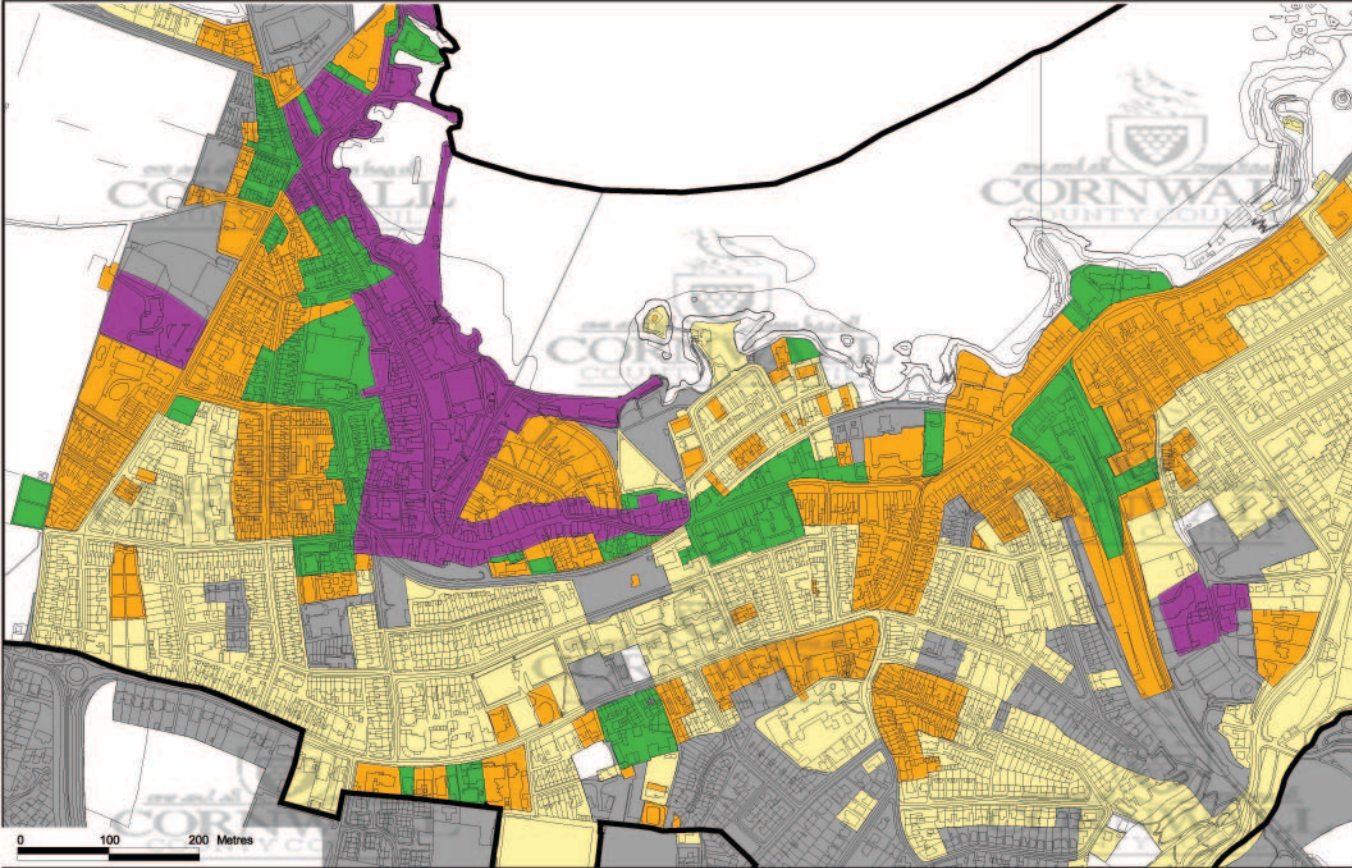
Figure 3. Historic development

Key

Primary study area (1933 urban extent)

- Settlement extent 1840
- c1840-c1880
- c1880-c1907
- c1907-c1933
- c1933-c1998

Eastern extent of 1933 OS revision mapping coverage - grey shading east of this line represents development in the period 1907-1998



CCC licence No. LA076538. All material copyright (c) Cornwall County Council 2002.

Cornwall Archaeological Unit  
Historic Environment  
Cornwall County Council  
(01872) 323603  
cau@cornwall.gov.uk

