
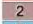
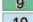

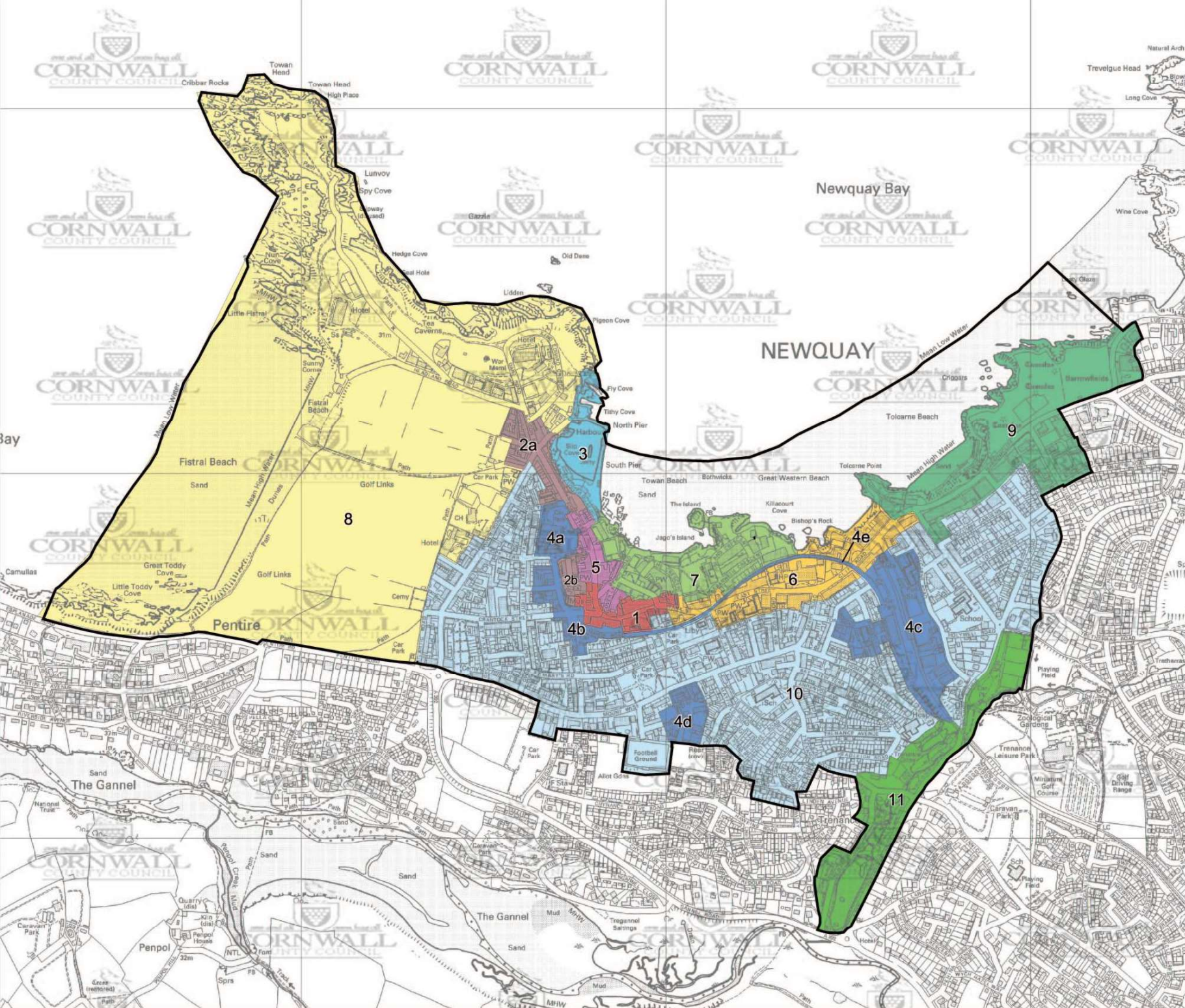


Figure 7.  
Character Areas

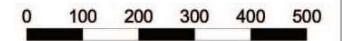
Key

 Primary study area  
(1933 urban extent)

- Character Areas:
-  1 Central commercial core
  -  2 Harbour related residential area
  -  3 The harbour
  -  4 Industrial area
  -  5 Secondary commercial - west
  -  6 Secondary commercial - east
  -  7 Towan promenade and Killacourt area
  -  8 Towan Head and Fistral Beach area
  -  9 Narrowcliff and Barrowfields
  -  10 Residential area
  -  11 Trenance Park



metres



CCC licence No. LA078538. All material copyright (c) Cornwall County Council 2002.

Cornwall Archaeological Unit  
Historic Environment  
Cornwall County Council  
(01872) 323603  
cau@cornwall.gov.uk

